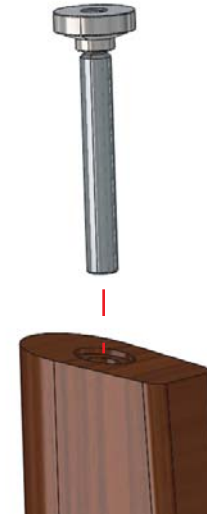
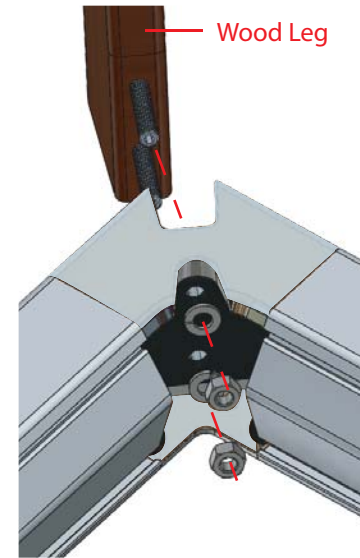
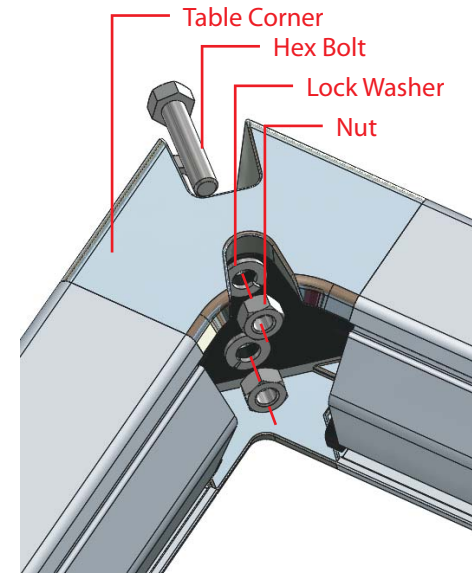
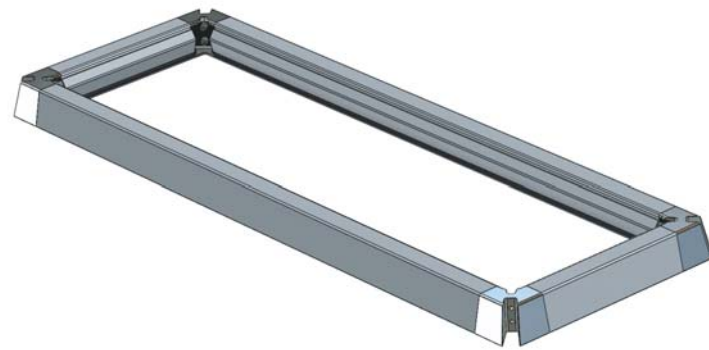


Cern Table with Wood Leg Installation Guide

THIS DRAWING IS CONFIDENTIAL AND PROPRIETARY. NO PART OF THIS DRAWING MAY BE COPIED, DISCLOSED TO ANY THIRD PARTY OR USED FOR ANY PURPOSE WITHOUT THE EXPRESS WRITTEN AUTHORIZATION OF NIENKÄMPER FURNITURE & ACCESSORIES



HARDWARE:

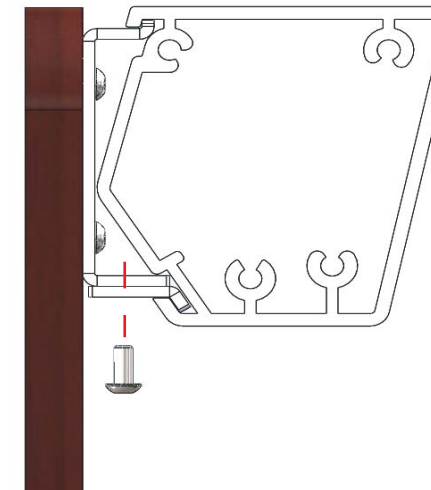
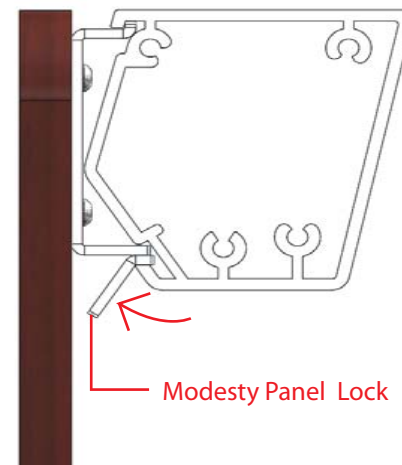
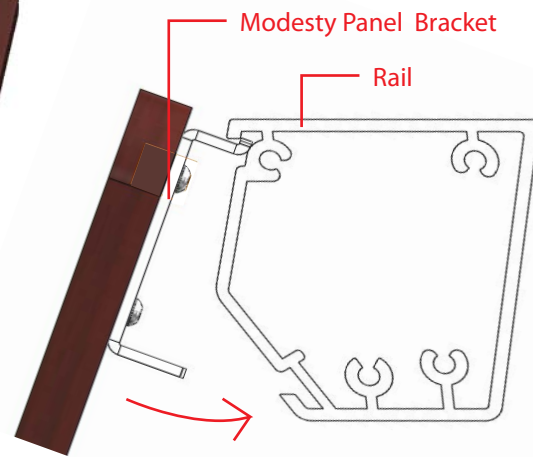
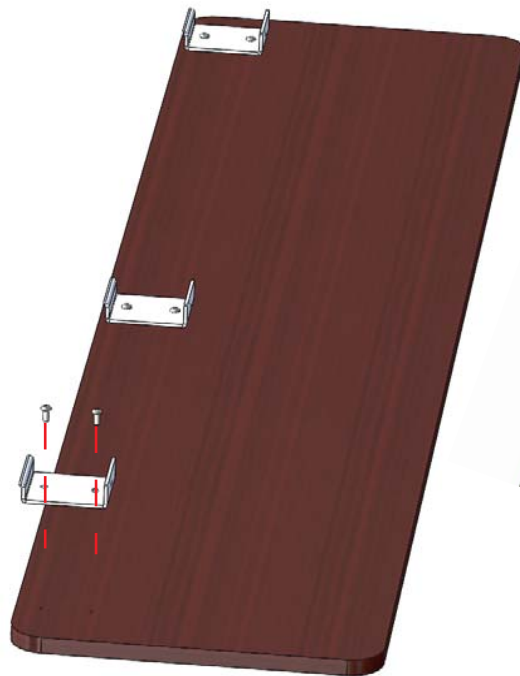
Top	[x1]	Lock Screw	[x3]
Frame assembly	[x1]	Modesty Bracket Screws	[x6]
Legs	[x4]	Modesty Panel	[x1]
Modesty Panel	[x1]	Grip tape	[x6]
Modesty Panel Bracket	[x3]	Leveller	[x4]
Modesty Panel Lock	[x3]		

STEP 1:
The frame ships with temporary hex bolts, lock washers and nuts holding the corners together. Loosen the hex bolts with a wrench and set lock washers and nut aside...they will be required in next step. **!WARNING- THE CORNERS WILL BE UNSECURED ONCE BOLTS ARE REMOVED BE CAREFUL NOT TO DROP OR DAMAGE!**

STEP 2:
To install the legs, align hanger bolts with through holes in corner and corner bracket. Secure in place with lock washers and nuts from step 1. Repeat for all legs.

STEP 3:
Screw the leveller foot into the threaded insert in bottom of leg. Repeat for all legs.

STEP 4:
Carefully rotate table structure into the upright position.



STEP 5:
Attach modesty panel brackets to modesty panel with #8x 3/8" pan head screws provided. [x3]

STEP 6:
To install modesty panel, carefully, align top bend of modesty bracket with groove in extrusion. Tilt into place.

STEP 7:
Position the modesty panel within frame and tilt modesty panel lock into the lower groove of the rail extrusion... This will act as a wedge between the bracket and locking tab.

STEP 8:
Secure the bracket and lock with 10-24 button head machine screw. Repeat for all brackets.

STEP 9:
Peel the adhesive back from the grip tape and stick it down to tops of legs, trimming if required. The top can now be placed on top of the completed assembly.