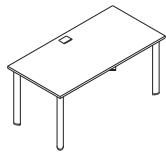


Vox®

Tel 800 668 9318
Tel 416 298 5700
Fax 416 298 9535
mail@nienkamper.com
www.nienkamper.com



MEETING TABLES AND VOX FORUM® INSTALLATION GUIDE

HARDWARE PARTS LIST



PAN HEAD PHILLIPS SHOULDER BOLT

3/4" - 1/4" - 20.

Attaches leg mounting plate to table top.



PAN HEAD PHILLIPS BOLT

3/4" - 1/4" - 20.

Attaches modesty panel brackets to underside of table top.



PAN HEAD PHILLIPS BOLT

1 1/2" - 1/4" - 20.

Attaches metal stretcher to underside of table top.



VOX PLASTIC CLIP

Used to gang tables and clip them together, designed to be able to quickly disconnect.

Shipped with all orders.

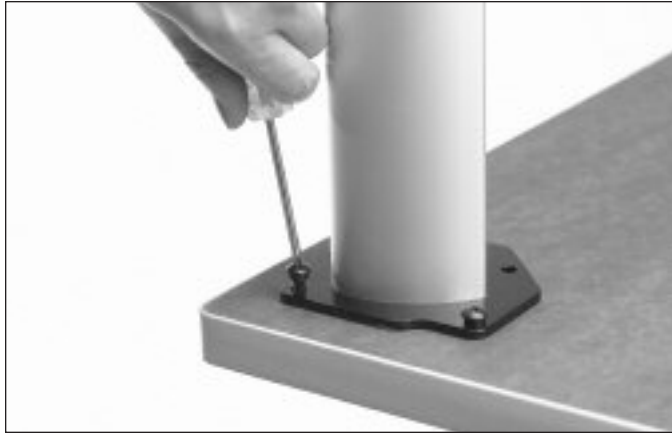


VOX GANG CLIP ASSEMBLY

Used to gang tables together, designed for more permanent installations and wood tops.

Only shipped as required.

ATTACHING LEGS TO TABLE



1

- Position top with underside facing up.
- Position the legs over pre-installed threaded inserts.
- Install 4 - 1/4" - 20 pan head shoulder bolts in each mounting plate.

INSTALLING VOX FORUM® (POWER/DATA)

2



- If the table is provided with power/data, unpack the Vox Forum® from its box and retrieve the swivel catches.
- Carefully thread plastic thumbscrews into inserts around the holes in the top.
- Position the Forum in the opening and carefully ease into the hole.
- Rotate the swivel catches and tighten the thumb screw fasteners.

Note: detailed installation instructions are included with all Vox Forums.

INSTALLING METAL SUPPORT STRETCHER



3

- If your table has been supplied with a metal support stretcher, position it over the threaded locations along the center of the table.
- Fasten the rail with the 1 1/2" x 1/4" x 20 Pan Head Phillips bolts supplied.

INSTALLING MODESTY PANEL

4



- Position the modesty panel mounting brackets aligning the holes on the bracket over factory installed threaded inserts.
- Install 3/4" x 1/4" - 20 pan head phillips bolt.

INSTALLING WIRE TROUGH



5

- Once the modesty panel has been attached to the top, center the wire trough between the table legs positioning it into the groove on the brackets.
- Push the trough down into the groove.

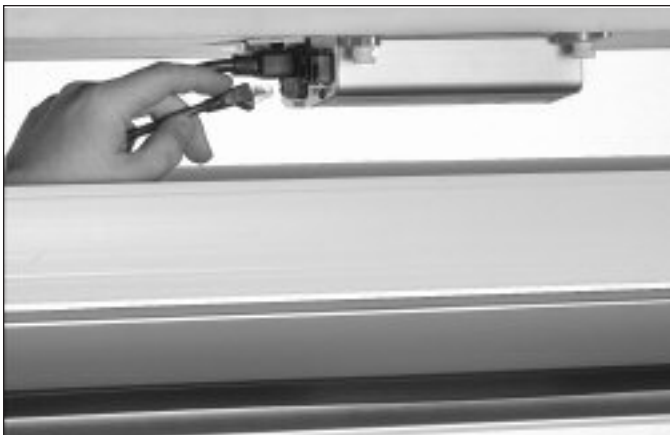
FIXING THE WIRE TROUGH



6

- Pull up the trough to lock into the groove.

ASSEMBLED TABLE



7

- Carefully turn the table over.
- Each Vox Forum is shipped with individual cables for each jack.
- Once plugged into the side of the Vox Forum, route cables into the trough.

INSTALLING CABLING - TROUGH



8

- To access the wire trough, simply pull the top of the modesty panel down.
- To close the modesty panel, rotate back into position and push the top of the panel to snap shut.



9

- The leg has 2 channels for separating and managing cables.
- From the trough, route cables to appropriate leg, inserting power and voice/data into separate sides of the leg.

10



- When the table is not supplied with wire trough and modesty panel, a wire management strip is supplied.
- Simply remove the adhesive backing and press into desired location.
- Position and press cables into place, routing cables into the legs as in #8.

JOINING TABLES WITH PLASTIC CLIPS

JOINING TABLES WITH METAL BRACKETS



11

12

- Multiple tables are provided with plastic joining clips.
- Place clip so that the notch in clip aligns with shoulder of screw attached to the leg.
- Pull clip so that it engages and snaps on to shoulder bolt.
- Clip has 2 position locking if a tighter joint is required.



- For tables with self edge wood tops or where more permanent joining of tables is required.
- Insert threaded knobs into table with metal gang clip.
- Position tables together, swivel catch into position and tighten clip.